



FAVRE LEUBA

1737



From heights to depths,
and everywhere in between.



FAVRE LEUBA

1737



FOREWORD

RAIDER BATHY120 MEMODEPTH

RAIDER HARPOON

RAIDER DEEP BLUE

RAIDER BIVOUAC 9000

RAIDER SEA SKY

CHIEF CHRONOGRAPH 

RAIDER SEA KING

RAIDER SEA BIRD

CHIEF DATE 



FOREWORD

When you challenge yourself to go beyond your limits, you are going to want the right partners by your side. Partners you can always rely on. Partners who will never let you down as together, you go further, higher, deeper, and faster. Partners like the watches from Favre Leuba.

Beautifully crafted and exceptionally capable, Favre Leuba watches combine the latest advances in precision mechanics with a style that reflects perfection, performance, and exemplary robustness. Your Favre Leuba watch is not just a timepiece, but a precision instrument that gives you the information you need, at all times, and everywhere – whether at unfathomable depths or at breathtaking heights, under exceptional circumstances or in everyday life.

Defiant – Enduring – Ingenious – Magnetic

Create your legacy with a Favre Leuba partner in time.





“From birth, man carries the weight of gravity on his shoulders. He is bolted to earth. But man only has to sink beneath the surface and he is free.”

– Jacques-Yves Cousteau

A world of silent wonder. A world of floating reefs. Where marine life swims into the hidden depths of unexplored beauty. Where gravity is defied, and a bottomless blue universe is waiting for explorers who dive into their dreams. Designed by engineers, crafted with years of expertise, and produced by perfectionists – the Favre Leuba dive watches are more than timepieces – they are indispensable diving tools for those who dream of the farthest fathoms.

Watches such as the Raider Bathy 120 MemoDepth let you record your deepest adventures, the Raider Harpoon lets you experience the ingenuity of deep diving instruments, and the Raider Deep Blue allows you to explore the blue waters in style and serenity.

Discover a diving companion created for your passion.



RAIDER BATHY120 MEMODEPTH

“When deep-sea diving, I am your precision depth gauge. When there is no room for error, I am your reliable partner. Dive to 120 m, and I will record your momentous exploration. Seek ingenuity, and I am the only one you will find.”





10000

9000

8000

7000

6000

5000

4000

3000

2000

1000

-120m

-1000

-2000

-3000

-4000

-5000

-6000

-7000

-8000

-9000

-10000





RAIDER BATHY120 MEMODEPTH

MOVEMENT

Hand-wound FL321 caliber; specially designed mechanisms for depth gauge and power-reserve indicator, power reserve of 65 hours.

FUNCTIONS

Hours, minutes, seconds, central hand for displaying current dive depth up to 120 m, depth gauge subdial for displaying maximum depth recorded, power-reserve indicator, date display.

CASE

Unidirectional rotating bezel with anodized aluminium insert, screw-in crown, sapphire crystal with antireflective coating on both sides, screwed and aligned case back, diameter 48 mm, height 19 mm, water-resistant up to 20 bar/200 m.

DIAL

Black dial with blue dive sector marking, red indication for decompression stops, applied indexes, luminous indexes and hour and minute hands, blue hands for displaying depth.





00.10108.06.51.31

CASE

Titanium

DIAL

Black with blue dive sectors

STRAP

Rubber with pin buckle





FUNCTION AND USE OF THE DEPTH GAUGE

The 200 m water resistant Raider Bathy 120 MemoDepth can indicate a diving depth of up to 120 meters. It performs this measurement with a simple but unconventional technique, wherein the water is allowed to enter the watch through a special chamber that houses a copper membrane. The perforation provided on the case back allows the water to enter this chamber, which is hermetically sealed from the one containing the watch movement, thereby protecting the watch while measuring vital information necessary during a dive.





RAIDER BATHY120 MEMODEPTH

The copper membrane temporarily deforms as a result of the increasing water pressure entering the chamber, and this information is registered by a mechanical contact sensor and relayed to the blue depth hands visible on the dial. The current depth of up to 120 m is read off using the central blue hand on a linear scale marked on the outer edge of the dial. A fine scale allows a detailed reading for the first 30 metres of depth. Two red markings between 3 and 6, and between 9 and 12 visible on the outer edge of the dial also indicate to the diver the most important decompression stops that should be undertaken during ascent.





READING THE MAXIMUM DEPTH (MEMODEPTH)

The Raider Bathy 120 MemoDepth also has a memory function. The sub-dial at 3H shows the maximum depth you have reached during your dive. As the diver descends and the depth increases, the central as well as a the small blue hands rotate clockwise to indicate the current depth. A gear mechanism designed ensures that the pointer on the subdial stops at the maximum diving depth so that this maximum diving depth can be reliably read off on a graduated scale. Meanwhile, during an ascent, the central blue hand rotates anti-clockwise to indicate the current depth during the ascent.





RAIDER HARPOON

“My engineers have omitted anything unnecessary. What remains has been completely rethought and redesigned. I’m the result – the ultimate diving watch. With only one hand. It lets me offer you everything you need to discover new worlds under water – and on land. I am brilliantly functional.”





10000

9000

8000

7000

6000

5000

4000

3000

2000

1000

0

-500m

-1000

-2000

-3000

-4000

-5000

-6000

-7000

-8000

-9000

-10000



RAIDER HARPOON

MOVEMENT

Automatic FL301 movement, based on the Sellita SW200 caliber; patented mechanism for hour display.

FUNCTIONS

Time display by minute hand and hour indicator, running seconds disk at the center for function control, helium valve.

CASE

Unidirectional rotating bezel made of anodized aluminum; screw-in crown; sapphire crystal with antireflection coating on both sides; screwed and aligned case back; diameter 46 mm, water-resistant up to 50 bar/500 m and diameter 42 mm, water-resistant up to 30 bar/300 m.

DIAL

Appliquéd index marks; luminous (blue emission) index marks and hour indicator, minute and second hands, markings under seconds disk.





READING THE TIME

During a dive, only the essentials count, such as how many minutes have elapsed. This insight led the engineers at Favre Leuba to design the Raider Harpoon with just a single hand – the minute hand. Striking and luminescent blue in the dark, it has easy and excellent readability, even when visibility is poor.



Seconds



Minutes



Hours

Examples of time display



12:00 p.m. or 12:00 a.m.



5:30 a.m. or 5:30 p.m.



9:45 a.m. or 9:45 p.m.



PATENTED*

Favre Leuba didn't want to do away with a complete time display. So a specially constructed and patented mechanism was added to rotate a ring – the hour indicator – with large Arabic numerals on the outer edge of the dial. The rotational speed of this hour indicator is adjusted such that the numbers return to their starting point after exactly twelve hours.

TIME DISPLAY

You can read the time from the interaction between minute hand and hour indicator. The central minute hand indicates the minutes on the dial in the traditional manner. At the same time, it points to the appropriate number on the co-rotating hour indicator.

SAFETY

The differently colored 20-minute scale on the unidirectional rotating bezel is an additional safety feature. It allows to keep dives perfectly on schedule. After all, if a diver doesn't remain under water for longer than 20 minutes, he or she can come up without decompressing.

CONTROLS

A diver always has to be sure that his or her watch is functioning properly. That's why there's also a turning disk in the center of the Raider Harpoon dial with a small tip that indicates the seconds and is also used for function control. In the dark, blue markings shine through gaps in the disk, so that all doubt about the functioning of the watch is avoided, even under water.



*Patent Pending



00.10121.10.14.31

CASE

Stainless steel
Gunmetal PVD-coating
Diameter 46 mm

DIAL

Black

BRACELET

Rubber, pin buckle





00.10101.08.13.20

CASE

Stainless steel
Diameter 46 mm

DIAL

Black

BRACELET

Stainless steel,
folding clasp with
safety bracket and
diving extension
system



00.10131.08.13.20

CASE

Stainless steel
Diameter 42 mm

DIAL

Black

BRACELET

Stainless steel,
folding clasp with
safety bracket and
diving extension
system





00.10101.08.13.31

CASE

Stainless steel
Diameter 46 mm

DIAL

Black

BRACELET

Rubber, pin buckle



00.10131.08.13.31

CASE

Stainless steel
Diameter 42 mm

DIAL

Black

BRACELET

Rubber, pin buckle





00.10101.08.13.41

CASE

Stainless steel
Diameter 46 mm

DIAL

Black

STRAP

Black calf leather,
pin buckle



00.10131.08.13.41

CASE

Stainless steel
Diameter 42 mm

DIAL

Black

STRAP

Black calf leather,
pin buckle





00.10101.08.52.31

CASE

Stainless steel
Diameter 46 mm

DIAL

Blue

STRAP

Rubber, pin buckle



00.10131.08.52.31

CASE

Stainless steel
Diameter 42 mm

DIAL

Blue

STRAP

Rubber, pin buckle





00.10101.08.52.20

CASE

Stainless steel
Diameter 46 mm

DIAL

Blue

BRACELET

Stainless steel,
folding clasp with
safety bracket and
diving extension
system



00.10131.08.52.20

CASE

Stainless steel
Diameter 42 mm

DIAL

Blue

BRACELET

Stainless steel,
folding clasp with
safety bracket and
diving extension
system





00.10101.08.52.41

CASE

Stainless steel
Diameter 46 mm

DIAL

Blue

STRAP

Black calf
leather, pin
buckle



00.10131.08.52.41

CASE

Stainless steel
Diameter 42 mm

DIAL

Blue

STRAP

Black calf
leather, pin
buckle





00.10101.09.13.31

CASE

Stainless steel,
Gunmetal
PVD coating
Diameter 46 mm

DIAL

Black

STRAP

Rubber, pin buckle



00.10131.09.13.31

CASE

Stainless steel,
Gunmetal
PVD coating
Diameter 42 mm

DIAL

Black

STRAP

Rubber, pin buckle





RAIDER DEEP BLUE

“Dive into unknown worlds. Into undiscovered depths. Feel the adrenaline. Feel alive. Do it all with the security of a reliable companion. I’m precise, I am perfectly readable in any situation, and I’m flawlessly easy to use. Together, we’ll know no limits.”





10000

9000

8000

7000

6000

5000

4000

3000

2000

1000

0

-300m

-1000

-2000

-3000

-4000

-5000

-6000

-7000

-8000

-9000

-10000



RAIDER DEEP BLUE

MOVEMENT

Automatic.

FUNCTIONS

Hours, minutes, running seconds disk at the center for function control, date display.

CASE

Unidirectional rotating bezel made of anodized aluminum; screw-in crown; sapphire crystal with antireflection coating on both sides; screwed and aligned case back; water-resistant up to 30 bar/300 m.

DIAL

Appliquéd index marks; luminous (blue emission) index marks, hour, minute and second hands, markings under seconds disk.





00.10122.10.14.31

MOVEMENT

Automatic Sellita SW200

CASE

Stainless steel,
Gunmetal PVD Coating
Diameter 44 mm

DIAL

Black

STRAP

Black rubber strap,
pin buckle



00.10106.10.14.31

MOVEMENT

Automatic ETA 2824-2

CASE

Stainless steel,
Gunmetal PVD Coating
Diameter 41 mm

DIAL

Black

STRAP

Black rubber strap,
pin buckle





00.10102.08.13.20

MOVEMENT

Automatic Sellita SW200

CASE

Stainless steel,
Diameter 44 mm

DIAL

Black

BRACELET

Stainless steel,
folding clasp with
safety bracket and
diving extension
systemg



00.10106.08.13.20

MOVEMENT

Automatic ETA 2824-2

CASE

Stainless steel,
Diameter 41 mm

DIAL

Black

BRACELET

Stainless steel,
folding clasp with
safety bracket and
diving extension
system





00.10102.08.13.31

MOVEMENT

Automatic Sellita SW200

CASE

Stainless steel,
Diameter 44 mm

DIAL

Black

STRAP

Rubber,
pin buckle



00.10106.08.13.31

MOVEMENT

Automatic ETA 2824-2

CASE

Stainless steel,
Diameter 41 mm

DIAL

Black

STRAP

Rubber,
pin buckle





00.10102.08.13.41

MOVEMENT

Automatic Sellita SW200

CASE

Stainless steel,
Diameter 44 mm

DIAL

Black

STRAP

Black calf leather,
pin buckle



00.10106.08.13.41

MOVEMENT

Automatic ETA 2824-2

CASE

Stainless steel,
Diameter 41 mm

DIAL

Black

STRAP

Black calf leather,
pin buckle





00.10102.09.13.31

MOVEMENT

Automatic Sellita SW200

CASE

Stainless steel,
Gunmetal PVD Coating
Diameter 44 mm

DIAL

Black

STRAP

Rubber,
pin buckle



00.10106.09.13.31

MOVEMENT

Automatic ETA 2824-2

CASE

Stainless steel,
Gunmetal PVD Coating
Diameter 41 mm

DIAL

Black

STRAP

Rubber,
pin buckle





00.10102.08.52.31

MOVEMENT

Automatic Sellita SW200

CASE

Stainless steel,
Diameter 44 mm

DIAL

Blue

STRAP

Rubber,
pin buckle



00.10106.08.52.31

MOVEMENT

Automatic ETA 2824-2

CASE

Stainless steel,
Diameter 41 mm

DIAL

Blue

STRAP

Rubber,
pin buckle





00.10102.08.52.41

MOVEMENT

Automatic Sellita SW200

CASE

Stainless steel,
Diameter 44 mm

DIAL

Blue

STRAP

Black calf leather,
pin buckle



00.10106.08.52.41

MOVEMENT

Automatic ETA 2824-2

CASE

Stainless steel,
Diameter 41 mm

DIAL

Blue

STRAP

Black calf leather,
pin buckle





00.10102.08.52.20

MOVEMENT

Automatic Sellita SW200

CASE

Stainless steel,
Diameter 44 mm

DIAL

Blue

BRACELET

Stainless steel,
folding clasp with
safety bracket and
diving extension system



00.10106.08.52.20

MOVEMENT

Automatic ETA 2824-2

CASE

Stainless steel,
Diameter 41 mm

DIAL

Blue

BRACELET

Stainless steel,
folding clasp with
safety bracket and
diving extension system





*"It's not the mountain we conquer, but ourselves."
– Sir Edmund Hillary*

Mountains hold a promise of the unexplainable. With each step we take, our spirit rises, and the veil of the unknown is slowly raised. The challenges we overcome are not the peaks and the dangers the mountains pose, but the restraints and fears we hold within. Designed for adventurers who need more than a typical timepiece, the award-winning Raider Bivouac 9000 has broken records and conquered frontiers. The watch's exclusive altimeter and barometer feature is the first and currently sole altimeter to display altitudes from 0 to 9,000 m as well as timely updates on weather conditions, based on the surrounding atmospheric pressure. An essential tool for explorers to break down barriers and scale the greatest heights.



RAIDER BIVOUAC 9000

“ I surpass even the highest mountain peak on land. No climb is too steep for me, no challenge too great. I can measure altitudes of up to 9,000 meters – mechanically. Nobody else is capable of doing that. Together, you and I are unstoppable.”





10000

9000m

8000

7000

6000

5000

4000

3000

2000

1000

0

-1000

-2000

-3000

-4000

-5000

-6000

-7000

-8000

-9000

-10000



RAIDER BIVOUCAC 9000

MOVEMENT

Hand-wound FL311 movement, based on the EMC 3903M caliber; specially designed mechanisms for altimeter and power-reserve indicator; power reserve of 65 hours.

FUNCTIONS

Hours, minutes, small seconds, central hand to display altitudes of 3,000 m per full rotation, subdial for displaying altitudes of up to 9,000 m and air pressure in hPa, power-reserve indicator, date display.

CASE

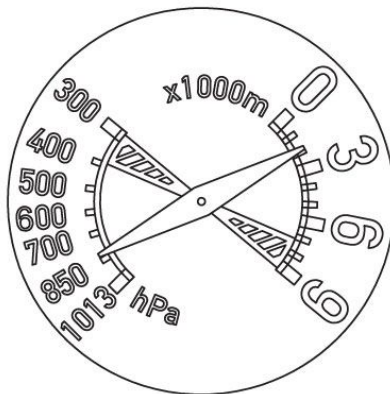
Bidirectional rotating bezel with anodized aluminum insert; sapphire crystal with antireflection coating on both sides; screwed and aligned case back; diameter 48 mm, water-resistant up to 3 bar/30 m.

DIAL

Applied indexes; luminous indexes and hour and minute hands, red hand for altimeter.



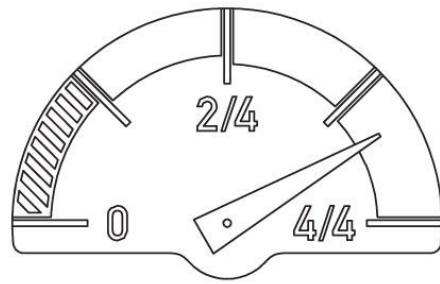
Altimeter-Barometer Information Display



Altimeter: The red central hand indicates the altitude on the bidirectional rotating bezel, which carries a scale divided into 50-meter steps, up to 3,000 meters. One full clockwise rotation of the red central hand thus indicates a climb in altitude of 3,000 meters. During a climb, the small red hand of the subdial located at 3 o'clock continues to turn too, until, after three full rotations of the central hand, it arrives at its final destination of 9,000 meters above sea level.

Air pressure display: The Bivouac 9000 is also capable of displaying any changes in air pressure at the same altitude. The hectopascal (hPa) scale on the subdial located at 3 o'clock displays the current air pressure on a scale ranging from 1,013 to 300 hPa.





Power-reserve indicator: Together with the altimeter and air-pressure display, the dial also features a power-reserve indicator at 12 o'clock. This gives the wearer plenty of warning when the watch needs to be wound after the movement has been running for around 60 hours. The mechanism that drives this power-reserve indicator is designed in such a way that it carries out its complex task with as few components as possible, which makes it much more reliable.





00.10105.06.46.45

CASE

Titanium

DIAL

Black

STRAP

Gray antelope leather with pin buckle





00.10105.06.45.45

CASE

Titanium

DIAL

Stone grey

STRAP

Gray antelope leather with pin buckle





"Do not go where the path may lead, go instead where there is no path and leave a trail."

— Ralph Waldo Emerson

Favre Leuba's multifaceted chronographs are the perfect partners for those who would like to redefine convention.

For those whose individuality and creativity matches their determination and courage, there is no better choice than the bold, athletic design of the Raider Sea Sky – a dive-style chronograph. For those who know that the secret to their success lies within, the minimalist yet magnetic design of the Sky Chief Chronograph with the precision timekeeping of the ETA Valjoux 7753 movement is their ideal companion.

When every minute adds value, and each moment is an adventure in the making, keep track and make time tick in your favor. Your chosen Favre Leuba chronograph is more than a partner in time – it is a partner in life.



RAIDER SEA SKY

"Water and earth. Depth and height. Cold and heat. South and north. I'm at home wherever we go. I combine the functionality of a chronograph with the practical benefits of a rotating bezel, because you expect more from your watch. Everywhere and all the time."





10000
9000
8000
7000
6000
5000
4000
3000
2000
1000
-200m
-1000
-2000
-3000
-4000
-5000
-6000
-7000
-8000
-9000
-10000



RAIDER SEA SKY

MOVEMENT

Automatic ETA Valjoux 7753 movement.

FUNCTIONS

Hours, minutes, small seconds, chronograph with 30-minute and 12-hour counters, date display.

CASE

Unidirectional rotating bezel made of anodized aluminum; screw-in crown; sapphire crystal with antireflection coating on both sides; screwed and aligned case back; diameter 44 mm, water-resistant up to 20 bar/200 m.

DIAL

Appliqued index marks; luminous (blue emission) index marks, hour and minute hands.





00.10103.08.13.20

CASE

Stainless steel

DIAL

Black/White

BRACELET

Stainless steel,
folding clasp with
safety bracket



00.10103.08.13.31

CASE

Stainless steel

DIAL

Black/White

STRAP

Rubber, pin buckle





00.10103.08.52.20

CASE

Stainless steel

DIAL

Blue/White

BRACELET

Stainless steel,
folding clasp with
safety bracket



00.10103.08.52.31

CASE

Stainless steel

DIAL

Blue/White

STRAP

Rubber, pin buckle





00.10103.09.13.31

CASE

Stainless steel,
Gunmetal PVD
coating

DIAL

Black/White

STRAP

Rubber, pin buckle





00.10103.08.16.31

CASE

Stainless steel

DIAL

Yellow/Black

STRAP

Black rubber strap
with pin buckle



00.10103.08.16.41

CASE

Stainless steel

DIAL

Yellow/black

STRAP

Black calf leather
strap with pin buckle



00.10103.08.16.44

CASE

Stainless steel

DIAL

Yellow/black

STRAP

Brown calf leather strap
with pin buckle





CHIEF CHORONOGRAPH

“My style: restrained, but expressive. I’m self-confident and full of character. I’m the quiet type, but the sounds I do make are unmistakable. You’ll recognize me immediately from the balanced symmetry of my displays. You can count on me, always. It’s your entrance!.”





10000

9000

8000

7000

6000

5000

4000

3000

2000

1000

-100m

-1000

-2000

-3000

-4000

-5000

-6000

-7000

-8000

-9000

-10000



CHIEF CHRONOGRAPH

MOVEMENT

Automatic ETA Valjoux 7753 movement

FUNCTIONS

Hours, minutes, small seconds, chronograph with 30-minute counter, date display

CASE

Screw-in crown; curved sapphire crystal with antireflection coating on one side; screwed and aligned case back; diameter 43 mm, water-resistant up to 10 bar/100 m

DIAL

Appliquéd index marks; luminous index marks, hour and minute hands





00.10202.05.31.20

CASE

Stainless steel,
rose gold bezel

DIAL

Anthracite

BRACELET

Stainless steel,
folding clasp
with safety bracket





00.10202.08.31.20

CASE

Stainless steel

DIAL

Anthracite

BRACELET

Stainless steel,
folding clasp
with safety
bracket





00.10202.08.35.47

CASE

Stainless steel

DIAL

Burgundy red with
brown counters

STRAP

Suede leather in
dark root brown





00.10202.08.10.48

CASE

Stainless steel

DIAL

Velvet black with
beige indexes

STRAP

Suede leather
in sand beige





00.10202.08.22.49

CASE

Stainless steel

DIAL

Panda with porcelain white dial,
black counters and red cherry indexes

STRAP

Suede leather in
khaki green





00.10202.08.27.50

CASE

Stainless steel

DIAL

Autumn green with
black counterss

STRAP

Suede leather
in oak brown





“Life isn’t about finding yourself. Life is about creating yourself.”

— George Bernard Shaw

Historic yet futuristic. Timeless yet contemporary. When day turns into night, when casual moves to formal, whether for a sporting activity or a sit-down meal – your timepiece needs to be as unique as your spirit and as adaptable as the style of the moment.

Explore each day with the Raider Sea King, which pairs perfectly with its partner watch – the Raider Sea Bird. With their striking facets tempered by the fluted bezel, the Raider Sea King and the Raider Sea Bird leave a lasting impression – just like their wearers.

Authentic, individual, and urbanely incomparable, the rounded shape of the Chief Date watch balances your understated style with an expressive outlook of confident perfection. Discover the unmistakable statement of the Chief Date.

Whether it is the sharp lines of the Raider Sea King or the timeless design of the Chief Date, an amalgamation of the past transitions into the bold look of the future – creating a retrofuturistic design philosophy that is unique to Favre Leuba.



RAIDER SEA KING

“Created from legends and designed for the future, where function is form and style is timeless. I am, discreetly, the king of my time, joining the journey you’ve chosen to take.”





10000
9000
8000
7000
6000
5000
4000
3000
2000
1000
0
-300m
-1000
-2000
-3000
-4000
-5000
-6000
-7000
-8000
-9000
-10000



RAIDER SEA KING

MOVEMENT

Automatic ETA 2824-2 movement.

FUNCTIONS

Hours, minutes, seconds, date display.

CASE

Stainless steel case; screwed-in crown; sapphire crystal with antireflection coating on both sides; screwed and aligned case back; diameter 41mm; water-resistant up to 30 bar /300 m.

DIAL

Applied index marks; luminous (blue emission) index marks, hour and minute hands.





00.10107.08.41.20

CASE

Stainless steel

DIAL

Gray

STRAP

Stainless steel,
butterfly clasp



00.10107.08.51.20

CASE

Stainless steel

DIAL

Blue

STRAP

Stainless steel,
butterfly clasp



00.10107.08.11.20

CASE

Stainless steel

DIAL

Black

STRAP

Stainless steel,
butterfly clasp





00.10107.08.41.45

CASE

Stainless steel

DIAL

Gray

STRAP

Gray antelope leather with pin buckle



00.10107.08.51.46

CASE

Stainless steel

DIAL

Blue

STRAP

Blue antelope leather with pin buckle



00.10107.08.11.41

CASE

Stainless steel

DIAL

Black

STRAP

Black antelope leather with pin buckle





RAIDER SEA BIRD

“When you walk with courage, time and again. When you grow with each step. When you feel weightless and free. Independent, beautiful and strong. Or even when challenged, raring to go. I am always a part of you. Giving proof with you that functionality and fine aesthetics are not mutually exclusive. That a feminine style fits perfectly with robust sportiness. I am a typical Favre Leuba.”





10000

9000

8000

7000

6000

5000

4000

3000

2000

1000

-100m

-1000

-2000

-3000

-4000

-5000

-6000

-7000

-8000

-9000

-10000



RAIDER SEA BIRD

MOVEMENT

Automatic or Quartz.

FUNCTIONS

Hours, minutes, seconds, date display.

CASE

Stainless steel; sapphire crystal with antireflection coating on both sides; screwed and aligned case back; water-resistant up to 10 bar /100 m.

DIAL

Applied indexes; luminous indexes, hour and minute hands.





00.10110.08.51.20

MOVEMENT

Automatic ETA 2824-2

CASE

Diameter 37 mm

DIAL

Midnight blue

BRACELET

Stainless steel,
butterfly clasp

00.10111.08.51.20

MOVEMENT

Quartz ETA F05.411

CASE

Diameter 34 mm

DIAL

Midnight blue

BRACELET

Stainless steel,
butterfly clasp





00.10110.08.21.20

MOVEMENT

Automatic ETA 2824-2

CASE

Diameter 37 mm

DIAL

Starlight White

BRACELET

Stainless steel,
butterfly clasp

00.10111.08.21.20

MOVEMENT

Quartz ETA F05.411

CASE

Diameter 34 mm

DIAL

Starlight White

BRACELET

Stainless steel,
butterfly clasp





00.10110.08.61.20

MOVEMENT

Automatic ETA 2824-2

CASE

Diameter 37 mm

DIAL

Shimmery Copper

BRACELET

Stainless steel,
butterfly clasp

00.10111.08.61.20

MOVEMENT

Quartz ETA F05.411

CASE

Diameter 34 mm

DIAL

Shimmery Copper

BRACELET

Stainless steel,
butterfly clasp





00.10110.08.71.20

MOVEMENT

Automatic ETA 2824-2

CASE

Diameter 37 mm

DIAL

Chocolate brown

BRACELET

Stainless steel,
butterfly clasp

00.10111.08.71.20

MOVEMENT

Quartz ETA F05.411

CASE

Diameter 34 mm

DIAL

Chocolate brown

BRACELET

Stainless steel,
butterfly clasp





CHIEF DATE

"I am minimalistic. Yet magnetic. I dominate the game with unmistakable and timeless aesthetics. With different layers and facets. I am a statement on your wrist. I am the Chief Date by Favre Leuba."





10000

9000

8000

7000

6000

5000

4000

3000

2000

1000

-100m

-1000

-2000

-3000

-4000

-5000

-6000

-7000

-8000

-9000

-10000



CHIEF DATE

MOVEMENT

Automatic ETA 2824-2 movement.

FUNCTIONS

Hours, minutes, seconds, date display.

CASE

Screw-in crown; curved sapphire crystal with antireflection coating on one side; screwed and aligned case back; water-resistant up to 10 bar/100 m.

DIAL

Appliquéd index marks; luminous index marks, hour and minute hands.





00.10201.05.31.20

CASE

Stainless steel,
rose gold bezel
Diameter 43 mm

DIAL

Anthracite

BRACELET

Stainless steel,
folding clasp
with safety bracket





00.10201.08.31.20

CASE

Stainless steel,
Diameter 43 mm

DIAL

Anthracite

BRACELET

Stainless steel with
butterfly clasp

00.10203.08.31.20

CASE

Stainless steel,
Diameter 40 mm

DIAL

Anthracite

BRACELET

Stainless steel with
butterfly clasp





00.10203.08.31.41

CASE

Stainless steel,
Diameter 40 mm

DIAL

Anthracite

STRAP

Black calf leather,
pin buckle



00.10203.08.31.44

CASE

Stainless steel,
Diameter 40 mm

DIAL

Anthracite

STRAP

Brown calf leather,
pin buckle





00.10201.08.51.20

CASE

Stainless steel,
Diameter 43 mm

DIAL

Blue

BRACELET

Stainless steel with
butterfly clasp

00.10203.08.51.20

CASE

Stainless steel,
Diameter 40 mm

DIAL

Blue

BRACELET

Stainless steel with
butterfly clasp





00.10201.08.51.41

CASE

Stainless steel,
Diameter 43 mm

DIAL

Blue

STRAP

Black calf leather,
pin buckle

00.10203.08.51.41

CASE

Stainless steel,
Diameter 40 mm

DIAL

Blue

STRAP

Black calf leather,
pin buckle





00.10203.08.11.20

CASE

Stainless steel,
Diameter 40 mm

DIAL

Black

BRACELET

Stainless steel
with butterfly
clasp



00.10203.08.11.41

CASE

Stainless steel,
Diameter 40 mm

DIAL

Black

STRAP

Black calf leather,
pin buckle



00.10203.08.11.44

CASE

Stainless steel,
Diameter 40 mm

DIAL

Black

STRAP

Brown calf leather,
pin buckle





00.10201.08.21.20

CASE

Stainless steel
Diameter 43 mm

DIAL

White

BRACELET

Stainless steel
with butterfly
clasp



00.10201.08.21.41

CASE

Stainless steel
Diameter 43 mm

DIAL

White

STRAP

Black calf leather
strap with pin
buckle



00.10201.08.21.44

CASE

Stainless steel
Diameter 43 mm

DIAL

White

STRAP

Brown calf leather
strap with pin
buckle





00.10201.08.25.41

CASE

Stainless steel
Diameter 43 mm

DIAL

Green

BRACELET

Black calf leather
strap with pin
buckle



00.10201.08.25.44

CASE

Stainless steel
Diameter 43 mm

DIAL

Green

STRAP

Brown calf leather
strap with pin
buckle





00.10201.05.26.41

CASE

Stainless steel,
rose gold bezel
Diameter 43 mm

DIAL

Green

BRACELET

Black calf leather
strap with pin
buckle



00.10201.05.26.44

CASE

Stainless steel,
rose gold bezel
Diameter 43 mm

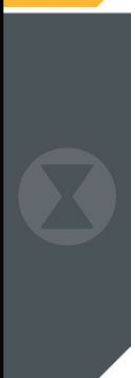
DIAL

Green

STRAP

Brown calf leather
strap with pin
buckle





On March 13, 1737, a watchmaker named Abraham Favre officially registered his workshop in the small Swiss town of Le Locle. Favre was not just a watchmaker – he was a watch engineer, passionate about timepieces and determined to create watches that pushed the boundaries of his era. Favre believed he could find ways to improve the technology of watches. He wanted to stabilize their workings at different temperatures and improve the materials used in watchmaking. Quite simply, he resolutely believed that he could make more reliable and accurate movements for the timepieces he created – and he did.

Over 283 years later, Abraham Favre's passion is still pushing the limits of watch engineering. The company he founded in 1737 is testament to how a dream can turn into a legacy that lasts far beyond our expectations – just like the watches that bear his name.

For over two and a half centuries, Favre Leuba has been producing some of the most groundbreaking watches of their time, including the Water Deep – one of the world's first dive watches; the Bivouac – the first ever altimeter and barometer wristwatch; and the Bathy – the first dive watch featuring a depth gauge. These highly sought-after historic collector pieces have been reinterpreted for a contemporary generation in a series of timepieces founded on the enduring legacy of their forebearers.



The record-breaking legacy now enters its third century as the brand continues to set new standards in watch engineering. The new Raider Bivouac 9000 measures altitudes up to a staggering 9,000 m, and the Raider Bathy 120 MemoDepth records the deepest dive point down to 120 m – capabilities not matched by any other watch today.

A Favre Leuba timepiece is the ultimate partner for people who, like Abraham Favre, know that passions and dreams have no limits. Your chosen Favre Leuba is part of an almost three-century legacy that has led an industry – not followed it.

At Favre Leuba, we believe legends have no time limits – just new challenges, new adventurers, and new partners in their journey.

Welcome to the Favre Leuba legacy.





FAVRE LEUBA

1737